

**BACKGROUND OF THE COMPANY**

JPZ Consulting (Bangladesh) Ltd. (JPZ) is a consulting firm with expertise in a wide range of disciplines such as architectural, civil, structural, electrical, mechanical engineering and management services.

Established in 2000, the firm draws its competitive edge from this synergy of multi-disciplinary planners, architects and engineers with specialized skills and experience that enable the firm to offer high-quality study, design supervision, project management and technical advisory services to broad range of clients in the private and public sectors.

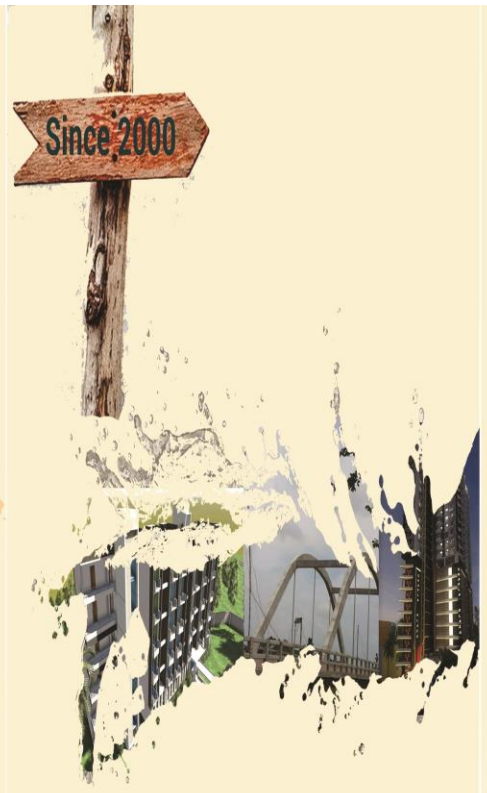
In order to provide project-based services, JPZ has developed many user-friendly computer software for the purpose of detailed engineering design, quantity surveying, project management and post-valuation services for the infrastructure projects. In recognition of the growing demand of computerization, JPZ has established its own computer section. The computer section is continuously being upgraded to cope up with the ever demanding professional services. JPZ also facilitates in-house training facilities to upgrade the knowledge how of the personnel in computer section, with special emphasis on operation of various software, database management and management information system. The computer software (both proprietary/in-house developed) are being used extensively for planning, design, analysis and monitoring of building, road, bridge and infrastructure projects.

JPZ offers architectural & engineering design and management services that cover a wide range of fields, which include:

Services	Fields
1. Baseline Surveys	❖ Project Concept and Planning
2. Engineering Surveys	❖ Transportation
3. Field Investigation and Testing	❖ Environmental Studies
4. Pre-Feasibility Studies	❖ Water Resources
5. Technical and Economic Feasibility Studies	❖ Water Supply
6. Detailed Design, Specification & BOQ	❖ Hydrology and Hydraulics
7. Cost Estimation, Tender Preparation and Documentation	❖ Coastal
8. Tender Appraisal	❖ Geotechnical
9. Contract Preparation and Administration	❖ Mechanical and Electrical
10. Value Engineering	❖ Bridges
11. Design and Safety Audit	❖ Dams
12. Construction Supervision and Monitoring	❖ Structural
13. Construction Management and Value Management	❖ Public Health
14. Rehabilitation Studies	❖ Land Development
15. Asset Management Studies	❖ Power and Control
	❖ Construction Supervision



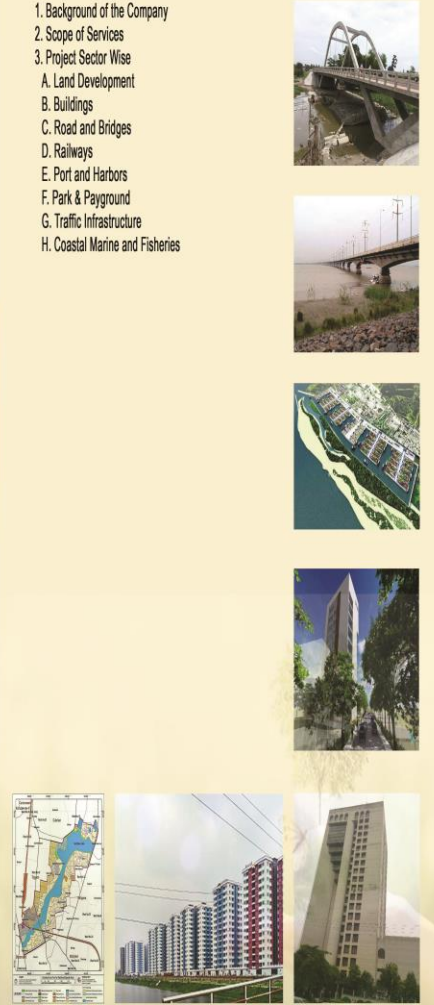
Corporate Office:  
 "Dream" 24, Level-5, Flat-5B, Block-A, Mohammadpur Housing Estate,  
 Mirpur Road, Dhaka-1207, Bangladesh  
 Tel: +88-02-48111780, +88-02-8142421,  
 E-mail: jpzbdltd@gmail.com, info@jzbd.com, Website: www.jzbd.com



**JPZ Consulting Bangladesh Ltd.**  
 Planning Engineering & Management Consultant

Index

1. Background of the Company
2. Scope of Services
3. Project Sector Wise
  - A. Land Development
  - B. Buildings
  - C. Road and Bridges
  - D. Railways
  - E. Port and Harbors
  - F. Park & Playground
  - G. Traffic Infrastructure
  - H. Coastal Marine and Fisheries



## A. LAND DEVELOPMENT

The firm's experience embraces all aspects of engineering from site development and infrastructure, commercial, residential, institutional, dams, bridges and precast technology for the public and private sectors.

Elegance, efficiency and economy - the essential elements of land development engineering that forms the basis of works carried out at JPZ. Through the application of modern technology and experience, JPZ Bangladesh provides creative, and frequently non-traditional, solutions in the integration of client needs, land reclamation and soil improvement engineering requirements.



Storm water Drainage Masterplan For Dhaka



Masterplan for RCC Park at Rajshahi



Beppa Economic Zone Masterplan at Moulvibazar



Teknaf Port Masterplan

## B. BUILDINGS



46 storied IC3 Tower at Rajshahi



City Center Padma



Uday Tower at Gubbani, Dhaka



Family Planning HQ



Independent University of Bangladesh

## D. RAILWAY PROJECT



Jamuna Bridge Crack Ripper



Panchagar-Bangabandha Rail Project

Rail transport represented a major development in land transport technology and has introduced an important change in the movement of freight and passengers. The development progress of railway services in Bangladesh during this long 158 years is not remarkable as it should have been. However, in recent years, the government of Bangladesh has taken a major step to develop the rail system.

The firm provides value to its clients in Feasibility study and design development planning and engineering by clarifying their needs, challenging assumptions and developing solutions with the highest level of quality and performance.

## C. ROAD AND BRIDGES

Transportation infrastructure, an important engine of growth that provides the vital connections that link people and their activities across a country as well as around the globe. Recognizing its importance to the development and growth of a nation, the transportation sector at JPZ has evolved and systematically grown in complexity from the design of rural road to the National highways in Bangladesh.

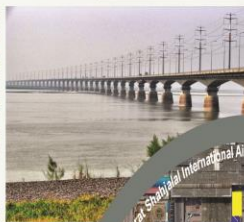
The firm provides value to its clients in Multi-Span-long bridge development planning and engineering by clarifying their needs, challenging assumptions and developing solutions with the highest level of quality and performance.



Nanirchar Bridge

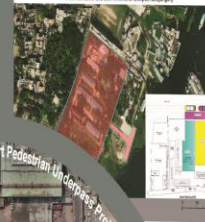


Sheik Hasina Cantorment Barishal



Shyambuj International Airport Pedestrian Underpass Project

Bangladesh Inland Water Transport Authority (BIWTA)  
Head Office and B&T Terminal at Dhaka, Bangladesh

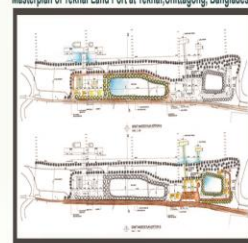


## E. PORT AND HARBORS

The fast growing of Bangladesh Economic The Government will take all necessary steps develop Port facility. However, it is clear that a new river & sea port is necessary for Bangladesh.

JPZ team involve for feasibility study, Design development and Project Management of different river port and sea port in Bangladesh.

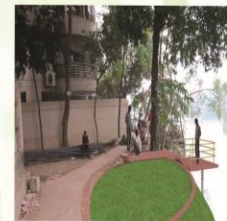
Masterplan of Teknaf Land Port at Teknaf, Chittagong, Bangladesh



## F. PARK & PLAYGROUND



DSCC Park & Playground Development



Gulshan-Bariðhara lake development

## G. TRAFFIC INFRASTRUCTURE

The firm provides to the clients for Different traffic infrastructure development, planning and engineering by clarifying their needs, challenging assumptions and developing solutions with the highest level of quality and performance.



Improvement of Traffic Management Infrastructure of Dhaka South City Corporation.



## H. COSTAL MARINE & FISHERIES

Costal Marine & Fisheries project most important for developing the blue economy in Bangladesh. The firm involved for planning, engineering and project management of different location Costal Infrastructure in Bangladesh funded by World Bank.



Construction Supervision & Management Sustainable Coastal and Marine Fisheries Project. (Phase-II)